



SFF, 16 Buckingham Place, Clifton, Bristol, BS8 1LJ

£275,000

A charming immaculate 1 bedroom apartment on the iconic Buckingham Terrace

- Grade II listed building
- Period features
- Immaculate condition
- Separate kitchen
- Gas central heating
- Desirable Clifton location
- Parking
- No onward chain

The Property

Ideally located in the heart of Clifton, this one-bedroom flat is situated at 16, Buckingham Place, a Grade II* listed terrace built circa 1843-45. By RS Pope.

Accessed via a charming wooden staircase, the apartment consists of a good size reception room, separate kitchen, double bedroom, and bathroom.

The whole flat has been sympathetically modernized and yet retains many period features such as cast-iron fireplaces, sash windows and cornices.

The inviting and bright reception room offers ample space for relaxing and dining whilst the adjacent well-appointed white quaker style kitchen offers plenty of storage and food preparation space. The kitchen features integrated appliances including electric hob, oven and extractor hood. The bedroom is a good-size double with plenty of space for wardrobes & drawers and is carpeted throughout with charming leafy view through the large sash window. The fully tiled bathroom has a double walk-in shower cubicle, hand basin with built in storage and mirror above and w/c. Additionally, the hallway is complete with a cupboard with additional storage. Finally, the property has the advantage of parking on a first come first serve basis.

Location - Clifton

Clifton and the surrounding areas, with its Victorian and Georgian architecture, are amongst the most sought after locations in the City. The area offers charm alongside excellent amenities with independent shops, boutiques, cafes, bars and restaurants to be found on both Whiteladies Road and Clifton Village including Clifton Down shopping Centre. The Downs offers four hundred acres of green public space whilst Brunel's Clifton Suspension Bridge provides a gateway to the Ashton Court Estate with its woodlands, mountain bike trails and walks whilst there is excellent access to the exciting Harbourside district, the City Centre and Temple Meads.

Other Information

Leasehold: 999 years from 25/12/1983

Management Fee: £75 pcm

Council Tax Band: B

Please Note

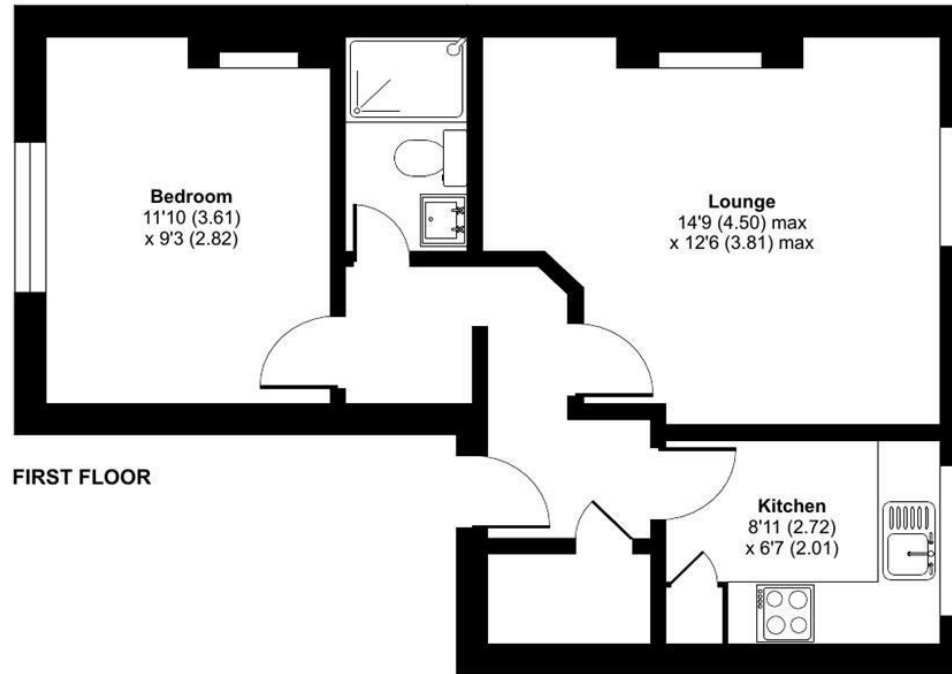
Hollis Morgan endeavour to make our sales details clear, accurate and reliable in line with the Consumer Protection from Unfair Trading Regulations 2008 but they should not be relied on as statements or representations of fact and they do not constitute any part of an offer or contract. All Hollis Morgan references to planning, tenants, boundaries, potential development, tenure etc is to be superseded by the information provided in your solicitors enquiries. It should not be assumed that this property has all the necessary Planning, Building Regulation or other consents. Any services, appliances and heating system(s) listed may not been checked or tested and you should rely on your own investigations. The seller does not make any representation or give any warranty in relation to the property and we have no authority to do so on behalf of the seller. Please note that in some instances the photographs may have been taken using a wide angle lens.



Buckingham Place, Clifton, Bristol, BS8

Approximate Area = 452 sq ft / 42 sq m

For identification only - Not to scale



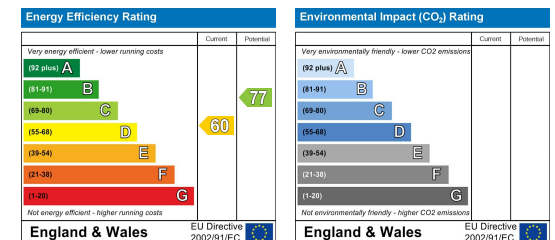
Floor plan produced in accordance with RICS Property Measurement Standards incorporating International Property Measurement Standards (IPMS2 Residential). © n̄checom 2024. Produced for Hollis Morgan. REF: 1194116



TEL | **0117 933 9522** | 9 Waterloo Street, Clifton, Bristol BS8 4BT

www.hollismorgan.co.uk | post@hollismorgan.co.uk

Hollis Morgan Property Limited, registered in England, registered no 7275716
Registered address, 5 Upper Belgrave Road, Clifton, Bristol BS8 2XQ



hollis
morgan
